



## 28. Richmond Road

Failsworth, Manchester, M35 9HZ

**Asking Price £290,000**



\*\*\*\*Spacious 2-Bedroom Semi-Detached Bungalow in a Popular Location\*\*\*\*No Chain\*\*\*\*

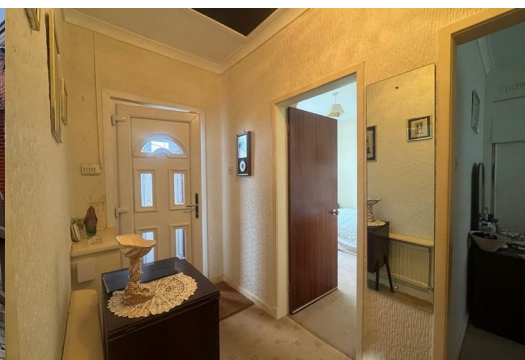
This deceptively spacious 2-bedroom true bungalow is ideal for families, offering 2 receptions, 2 double bedrooms, and 2 loft rooms.

**Key Features:**

Two spacious reception rooms

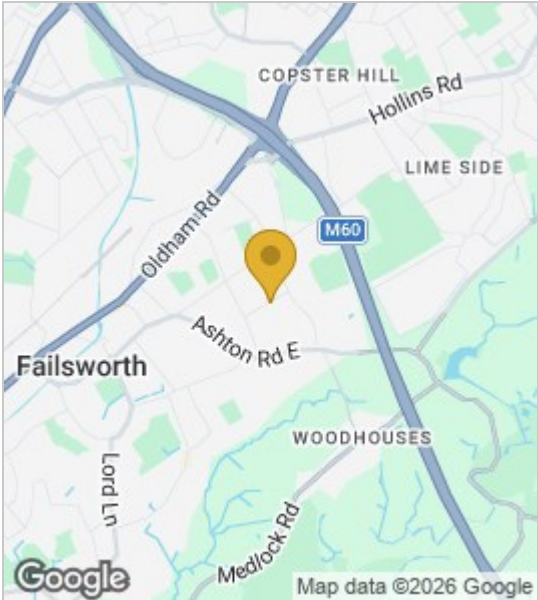
Two double bedrooms

Two versatile loft rooms

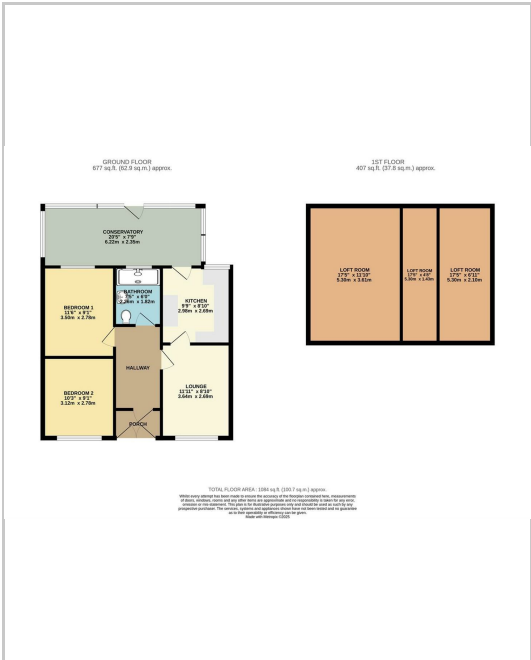


- Living room
- Kitchen
- Bathroom
- Bedroom 1
- Bedroom 2
- Loft room 1
- Loft room 2
- Conservatory

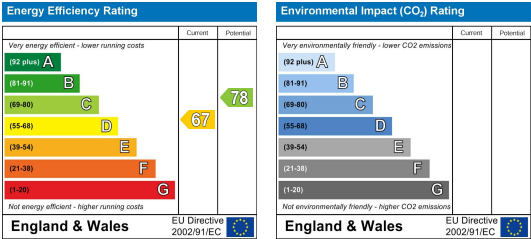
Area Map



Floor Plans



Energy Efficiency Graph



These particulars, whilst believed to be accurate are set out as a general outline only for guidance and do not constitute any part of an offer or contract. Intending purchasers should not rely on them as statements of representation of fact, but must satisfy themselves by inspection or otherwise as to their accuracy. No person in this firm's employment has the authority to make or give any representation or warranty in respect of the property.

